

Call System hospicall P3



Call systems in accordance with
DIN VDE 0834 for hospitals, care homes
and similar institutions

Since 2004 we have continued to develop – for you as well!



hospicall GmbH was founded in July 2004. The focus of the business is the development and manufacture of practice-oriented and cost-efficient call systems conforming to DIN VDE 0834.

The original company headquarters in Gummersbach could not withstand the increasing requirements. Thus, in August 2009, the company relocated to Wiehl-Bomig. Here, manufacturing, stores and a two-storey administration area were optimally combined under one roof.

In the course of this change in location, investment in new machinery and storage facilities was made. An important step for the optimisation of production processes and preparation for the challenges of market and company development.



<i>Contents</i>	<i>Page</i>
System Description	4
P3 System Overview	6
P3 System Control Unit	8
Power Rectifier	10
Battery Set	11
Zone Controller	12
Room Terminal Duty Room with Display	14
Desktop Stand for Duty Room Terminal	16
Room Terminal with Display	18
Room Module	20
Call / Cancel Units	22
Call Unit with Auxilliary Socket	28
LED Corridor Indicator Lamps	30
LED Clinic Corridor Indicator Lamps	30
Nameplate with LED Corridor Indicator Lamp	32
Pear / Multiple Push-Buttons / Pull Cord Switches	34
Multiple Push-Button Sound / Patient Handset	36
Interface Units, Current Impulse Switch	38
Corridor Display	39
HC3 Call Set	41
HC3 Duty Room Unit, HC3 Duty Room Terminal	42
HC3 Accessories	43
Small Horn, Y-Adapter, Connection Extension	
Connection Cord DIA	44
Radio Set with Radio-Controlled Pendant Transmitter, Radio Transmitter, Accessories, Sound Detector	46

System Description

General

The call system hospicall P3 is a modern call system conforming to VDE 0834 –1/2 : 2000-04; it particularly takes into consideration the increasing requirements of modern call systems for economic efficiency. This applies not only to the acquisition and installation of the system, but also to operation, in particular where the support of the different care organisations in the day-to-day care routine of hospitals and care homes is concerned. The system can be used according to DIN / VDE in Application Areas 1 and 2.

System structure

hospicall P3 is a de-centrally structured, scalable system, which, through its modularity and flexibility, is just as suitable for the smallest systems with two or three treatment rooms as for an institution with several different residential areas or wards and function areas.

Hereby, the System Control Unit is the master control unit for the entire system and, in addition to the required monitoring functions, takes on responsibility for communications spanning the zones between the connected zone controllers. These work as control units for a ward or a care group and control the data traffic between the individual rooms and areas. An important task is the control of optical and acoustic call forwarding and/or call handling, as well as the sending of this information to the higher ranking modules. The room terminals, room modules and information displays are connected to the zone controller via the zone bus. In particular, the room terminals and room modules function as control units for a room. The room terminal contains the operating elements for the care personnel and an LCD display, as well as the operational elements for call release and presence indication. Depending on how the room is equipped, the other release elements of the room as well as the corridor indicator lamps (where not integrated into the room module) are connected to the room terminal or room module. Different call units can be connected for the various call release requirements. In the various models the call units are supplied with call and cancel buttons as well as presence buttons, sockets for pear and multiple push-buttons, as well as a means of connecting medical equipment, which send alarms via the call system. In the corridor the care personnel are informed via the large wall or ceiling mounted displays, duty room terminals for wall mounting or desktop table mounting are available in the duty room, by means of which organisational measures such as zone linking can be carried out as well as call processing.



System Integration / Interfaces

Of course the system hospicall P3 has a variety of interfaces available for messaging systems (DECT systems, paging systems, GSM mobile telephone) or old equipment. The call logging and evaluation can be made available in each duty room via a standard data network (CAT5 wiring according to DIN EN 50173).

The operating devices in the rooms with their mechanical characteristics are adapted to the current requirements of the switch industry, taking into account the architectural aspects, which are not only indispensable in pleasantly laid out senior residences.

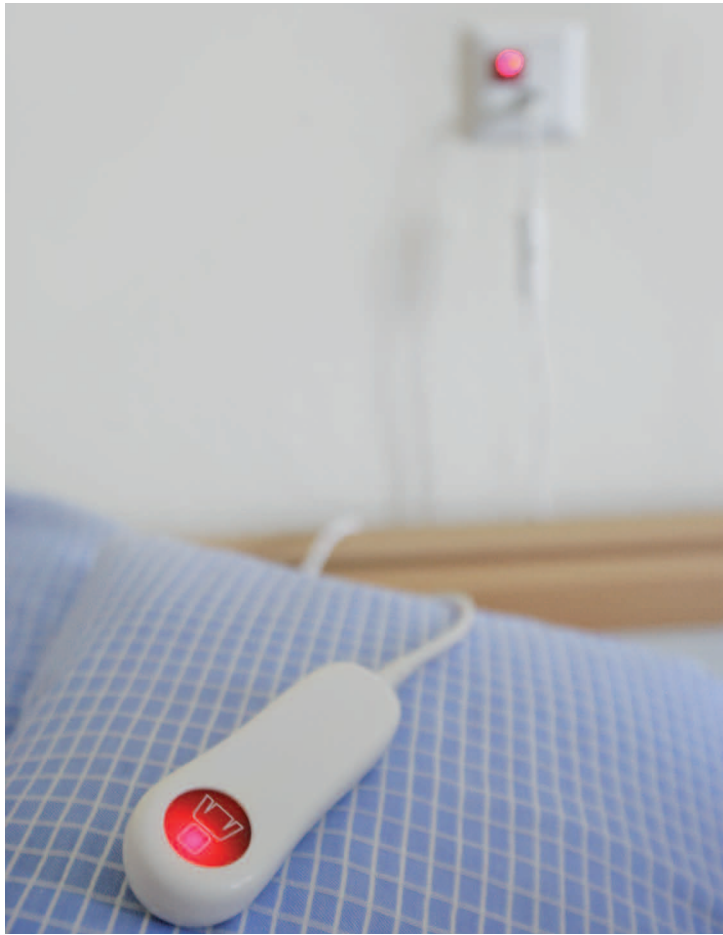
Also, the integration of these units in lighting rails or medical care equipment is guaranteed.



Configuration

The configuration of the system is tuned to the requirements of the installation and commissioning as well as the maintenance. It takes place partly de-centralised in the rooms (definition of the room terminal and room module addresses) as well as centrally via the system control unit with standardised browser technology. Here the central parameters are basically set up and the description of the room (ward, care area, room number) is entered.





Design Programme and Colour Design

The design AURA from PEHA is the standard design supplied for all switches. The switches are pure white, similar to RAL 9010 and are equipped with cover plate and frame. Other colours and models from this and other well-known design programmes are available on request, in some cases at no additional cost!

As standard, all room terminals and name-plate indicator lamps are also in pure white, similar to RAL 9010, with other RAL colours being available on request.

Supply Network

For the wiring of the call system hospicall P3, the telecommunication cable type IY(St)Y is sufficient. Special system cables are not required. This means that, above all, the use of existing cables when renovating is a great economic advantage. Apart from the wires for the current supply (24V, GND), a twisted pair is required for the data line. The length of the wire can thereby be up to 1000 m.

Safety

Since with a call system one is dealing with safety equipment, the system hospicall P3 is fitted with different safety functions. On the one hand, short-circuit-proof inputs protect the electronics if wiring errors occur in the installation phase; on the other hand, the central hierarchical system structure guarantees the basic functions of the release and indication of calls even if individual modules fail.

As the smallest unit, an individual room works here in the so-called emergency mode, by which the call release is indicated optically outside the room via the indicator lamp and acoustically inside the rooms with set presence. System faults are indicated immediately to the care staff as well as to the service personnel via the various display units. Thereby, the system can also be supported through remote maintenance by external service technicians.



Installation

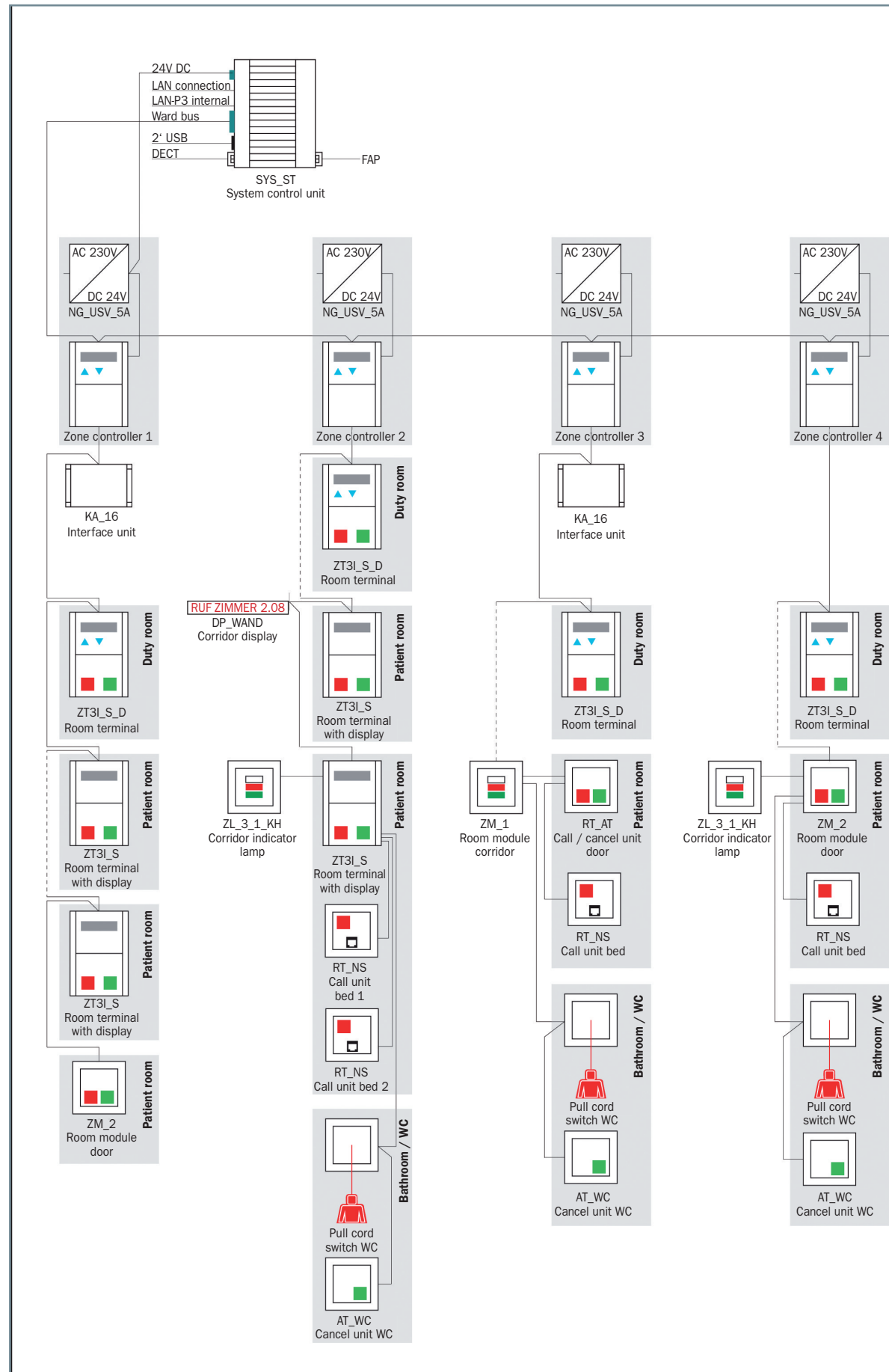
In order to keep the installation of the system as simple and economical as possible, the components have been conceived in such a way that all units in the rooms can be installed in connection with round switch boxes. Depending on the structure of the building, surface, flush and cavity-wall mounting can be used. The wires are connected by means of screw or plug-in terminals.

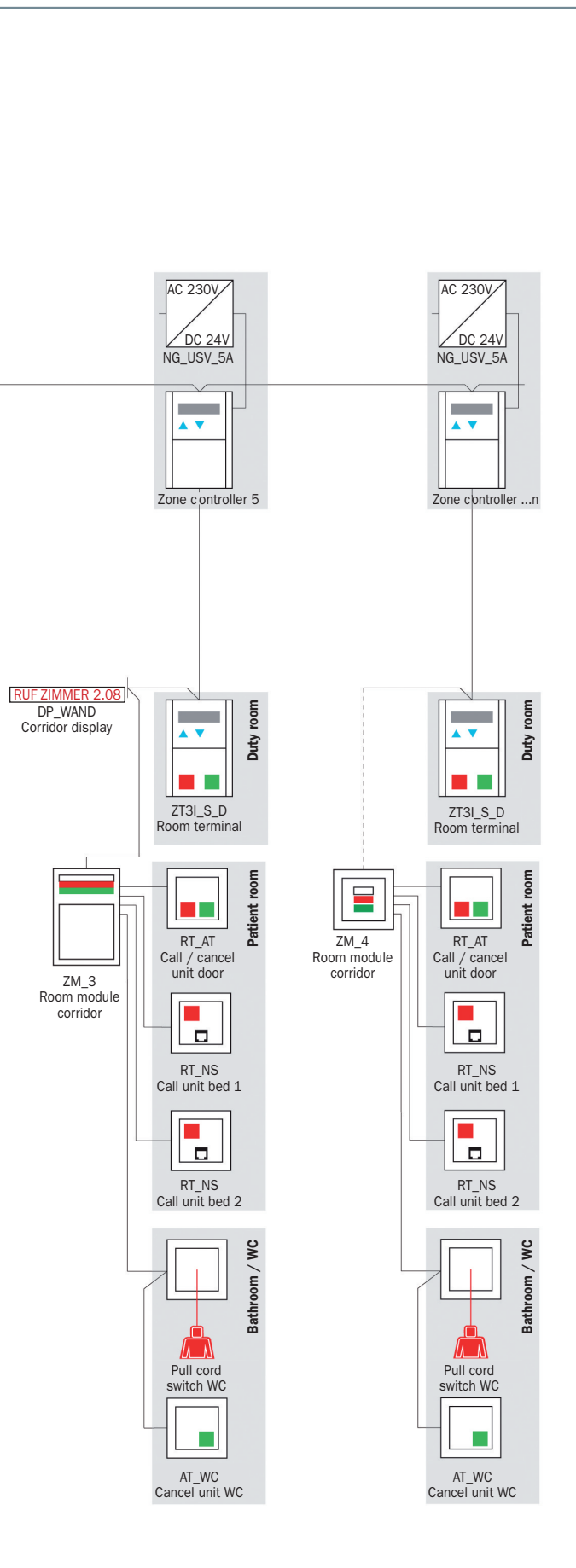
A particular feature is the construction of the pull cord switch, which can be installed on the wall or the ceiling. This means that it is possible to install the pull cord switch over the lid supports of the WC in the disabled WC.

Operation

The call system also proves its worth in operation through its economic advantages. On the one hand, the energy-saving technology of the LED corridor indicator lamps leads to less energy consumption than for conventional lamps, and on the other hand, maintenance expenditure is reduced since the operating life of LED's is up to 20 times longer than that of the previously used piston lamps or soffits.

P3 System Overview





P3 System Control Unit

The P3 system control unit is the higher ranking control unit for the entire system and takes over the required monitoring functions, as well as the inter-zone communication. Via a LAN link, the system control unit establishes the connection to the networked computer structure. Here configuration of the system takes place, as well as the data exchange with the optionally available operating computers in the ward rooms. A further option is the exchange of data with existing information systems. For the forwarding of call information to messaging systems (pager, wireless DECT telephone systems etc.) the appropriate hardware and software interfaces are available as options. Configuration of the system is carried out via the LAN link with standardised browser technology.

The P3 system control unit is fitted with modern processor technology and consists of a computer including voltage converter as well as a fuse holder for top hat rail mounting, for a micro-fuse for protection of the supply voltage. No removable storage media are used. The system and operating data is held in non-volatile storage media in flash technology. The system control unit also contains the appropriate software for call and presence logging. The data is stored in the system control unit. Evaluation of the log can be carried out on any customer-provided PC via a standard LAN connection. Remote maintenance is possible with a separate ISDN remote maintenance module for the customer PC, via a standard LAN connection.



System Control Unit including:

- ☐ Software for call and presence logging and log evaluation
- ☐ Configuration software for programming of system parameters of the call system
- ☐ Voltage converter and interface converter
- ☐ Fuse holder for top hat rail mounting
- ☐ Software module for integration of time server in the SYS-ST via LAN

TECHNICAL DATA:

Dimensions (W x H x D):	122 x 90 x 60 mm
Power supply:	Power max. 10 Watt Input voltage 24 Volt
Installation:	Mounted on DIN rail
Order number:	32 05 01
Type:	SYS-ST

ISDN Remote Maintenance Module

For the customer-installed PC, consisting of hardware and software for remote configuration of the system control unit.

Order number:	39 10 10
Type:	FWM-ISDN

19" Bracket

With DIN rail for installation of the control technology in 19" cabinet (or similar).

Order number:	32 09 00
Type:	19"-TRÄGER-3HE

ISDN Remote Maintenance Unit

For ISDN connection, consisting of hardware and software for remote configuration of the system control unit.

Dimensions (W x H x D):	250 x 220 x 55 mm
Installation:	Mounted on DIN rail
Order number:	39 10 21
Type:	FWE-TC-ISDN

DCF77 Module

The DCF77 module consists of software and hardware components for coupling the DCF77 signal into the patient call system P3 via the ward bus.

Dimensions (W x H x D):	99 x 88 x 35 mm
Installation:	Wall mounted
Order number:	39 10 01
Type:	DCF-SW-HW



FAP Interface

For the system control unit for connection of the call system to the fire detection system using ESPA 4.4.4 protocol.

Order number:	32 10 10
Type:	SW-IF-BMA-01

DECT Interface

For the system control unit for connection of the call system to the control unit of a DECT system or to the message server of a telecommunications system with integrated DECT devices using ESPA 4.4.4 protocol.

Order number:	34 10 00
Type:	SW-IF-ESPA

Power Rectifier 24V 5A

For the power supply of the call system P3.

- ☐ Closed design
- ☐ Contact-protected screw terminals
- ☐ Overload protection through current limitation, auto-recovery short-circuit-proof
- ☐ 100% burn-in-test under full load
- ☐ Built-in interference suppression filter, minor residual ripple
- ☐ Incl. miniature fuse-holder for top hat rail mounting for secondary protection

TECHNICAL DATA:

Dimensions (W x H x D):	65.5 x 125.2 x 100 mm
Nominal output voltage:	24V DC +/- 1%
Output power:	5A
Input voltage:	100-120V AC/200-240V AC 47-63 Hz switchable
Installation:	Mounted on DIN rail
Order number:	32 04 00
Type:	NG-5A



Power Rectifier with Integrated UPS 24V 5A

For the power supply of the call system P3.

- ☐ Compact DC UPS with all components
- ☐ Consists of: power supply, charger, online DC UPS module
- ☐ Couples the output by total power failure
- ☐ Uninterrupted to the battery supply
- ☐ Has automatic total battery discharge protection
- ☐ Automatic battery test
- ☐ Incl. miniature fuse-holder for top hat rail mounting for secondary protection

TECHNICAL DATA:

Dimensions (W x H x D):	250 x 260 x 100 mm
Output voltage:	24V DC +/- 1%
Input voltage:	90-264 V AC 47-63 Hz
Battery capacity:	4.0 Ah
Installation:	Mounted on DIN rail
Weight:	5.4 kg
Order number:	32 04 54
Type:	NG-USV-5A



Power Rectifier 24V 2A

For the power supply.

- ☐ Closed design
- ☐ Contact-protected screw terminals
- ☐ Overload protection through current limitation, auto-recovery short-circuit-proof
- ☐ 100% burn-in-test under full load
- ☐ Built-in interference suppression filter, minor residual ripple
- ☐ Incl. miniature fuse-holder for top hat rail mounting for secondary protection

TECHNICAL DATA:

Dimensions (W x H x D):	78 x 93 x 67 mm
Nominal output voltage:	24V DC +/- 1%
Output power:	2A
Input voltage:	230V AC
Installation:	Mounted on DIN rail
Order number:	32 04 02
Type:	NG-2A





Battery Set

For use in the power rectifier with integrated UPS 24V 5A.

Accessories for part:	32 04 50
Order number:	32 04 51
Type:	NG-AKKU-2,2

Accessories for part:	32 04 54
Order number:	32 04 53
Type:	NG-AKKU-4

Zone Controller

The zone controller is the central control unit for a ward. It controls the optical and acoustic call indication in the associated rooms. It communicates with the room modules via the zone bus. Thereby, it controls the function of the connected units and indicates faults for devices and wiring.

Via the zone controller, different system settings can be set up for the respective ward. The equipment has a 32-character alphanumeric display as well as three function keys available for this purpose. These are also used for the configuration of the ward during commissioning. Further, diagnostic functions can also be called up by this means. The zone controller supports the care organisation of a ward with the possibility of dividing it into up to three care groups.

FUNCTIONS:

- ☐ Configuration when commissioning
- ☐ Diagnosis functions
- ☐ Control of the optical and acoustic call handling
- ☐ Monitoring of the attached devices and wiring

MECHANICAL DETAILS:

Dimensions (L x W x H):	150 x 100 x 30 mm
Protection class:	IP40
Material:	PC-ABS
Housing:	white, similar to RAL 9010
Interfaces:	<ul style="list-style-type: none"><input type="checkbox"/> Zone bus to the room modules<input type="checkbox"/> Ward bus to the system control unit<input type="checkbox"/> Potential-free fault indicator contact<input type="checkbox"/> Input for telephone switching<input type="checkbox"/> Control of zone lamps
Installation:	Mounted on DIN rail
Order number:	32 02 00
Type:	GZ-01

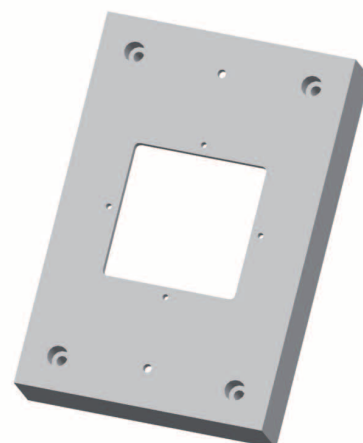


Surface Mounted Base for Zone Controller

The surface mounted base is used for surface mounting the zone controller.

MECHANICAL DETAILS:

Dimensions (L x W x H):	150 x 100 x 23 mm
Material:	Polystyrene
Colour:	white, similar to RAL 9010
Order number:	31 10 10
Type:	AP-ZT



GZ Programming Set

Hardware and software for programming the room display with a notebook (V24).

- ☐ USB stick with programming software
- ☐ RS485/RS232 converter (incl. connection cable with 4-pin connector)
- ☐ Serial extension cable with 9-pin D-sub connector and 25-pin D-sub connector
- ☐ 1 x 4-pin connector for GZ

Order number:	39 00 50
Type:	GZ-PROG-SET

Zone Controller

(star connection)

The zone controller is the central control unit for a ward, whereby the bus clients are wired in a star formation. The zone controller controls the optical and acoustic call indication in the respective rooms. It communicates with the room modules via the zone bus. Thereby, it controls the function of the connected units and indicates faults for devices and wiring.

Via the zone controller, different system settings can be carried out for the respective ward. The device has a 32-character alphanumeric display as well as three function keys available for this purpose. These are also used for the configuration of the ward during commissioning. Further, diagnostic functions can also be called up by this means. The zone controller supports the care organisation of a ward with the possibility of dividing it into up to three care groups.



FUNCTIONS:

- ☐ Configuration when commissioning
- ☐ Diagnosis functions
- ☐ Control of the optical and acoustic call handling
- ☐ Monitoring of the attached devices and wiring

MECHANICAL DETAILS:

Dimensions (L x W x H):	200 x 145 x 77
Protection class:	IP40
Material:	PC-ABS
Housing:	white, similar to RAL 9010
Interfaces:	<div><input type="checkbox"/> Zone bus to the room modules</div> <div><input type="checkbox"/> Ward bus to the system control unit</div> <div><input type="checkbox"/> Potential-free fault indicator contact</div> <div><input type="checkbox"/> Input for telephone switching</div>
Installation:	Mounted on DIN rail
Order number:	32 02 01
Type:	GZ-S

Room Terminal Duty Room with Display

The room terminal for duty room is the central control and operating unit for the duty room. Large push-buttons for presence marking as well as for call/emergency call release are available for the care staff. Targeted important information for the care staff is indicated via a backlit 32-character dot matrix display. Thereby, individual additional information can be called up and zones can be linked together via three function keys. A corridor indicator lamp can be connected to the duty room terminal to enable call indication in the corridor. Via the zone bus, the duty room terminals of a ward are connected to the associated zone controller.



Room Terminal Duty Room with Display

FUNCTIONS:

Presence push-button (AW), cancel push-button	green (AW1)
Remind lamp	green
Call / emergency call push-button	red
Orientation / reassurance lamp	red
Doctor call push-button for doctor call release	-
Call indication via display	dot-matrix display
Acoustic call forwarding through noise generator	✓
Emergency mode by loss of data traffic	✓
Zone linking via function keys	✓
Monitoring of the connected call release elements	✓
Acoustic and optical indication of faults in the room via display	✓

MECHANICAL DETAILS:

Dimensions (L x W x H):	150 x 100 x 30 mm
Protection class :	IP40
Material:	PC-ABS
Housing:	white, similar to RAL 9010
Call push-button:	red, similar to RAL 3000
Doctor call push-button:	-
Presence push-button 1:	grün, ähnlich RAL 6018
Presence push-button 2:	-
Interfaces:	Zone bus to zone controller
Outputs:	Corridor indicator lamps with call lamp, call lamp WC, presence lamp AW1
Inputs:	Passive call / cancel units, call button WC, cancel button WC, 4 call buttons
Installation:	
Accessories: Connection board for duty room terminal (Page 16)	✓
Order number:	32 00 30
Type:	ZT3I-S-D



**Room Terminal Duty Room with Display,
Doctor Call and Presence 2**



**Room Terminal Duty Room with Display
and Doctor Call**



**Room Terminal Duty Room with Display
and Presence 2**

green (AW1) + gelb (AW2)	green (AW1)	green (AW1) + yellow (AW2)
green + yellow	green	green + yellow
red	red	red
red + red	red + red	red
blue	blue	-
dot-matrix display	dot-matrix display	dot-matrix display
✓	✓	✓
✓	✓	✓
✓	✓	✓
✓	✓	✓
✓	✓	✓

150 x 100 x 30 mm	150 x 100 x 30 mm	150 x 100 x 30 mm
IP40	IP40	IP40
PC-ABS	PC-ABS	PC-ABS
white, similar to RAL 9010	white, similar to RAL 9010	white, similar to RAL 9010
red, similar to RAL 3000	red, similar to RAL 3000	red, similar to RAL 3000
blue, similar to RAL 5010	blue, similar to RAL 5010	-
green, similar to RAL 6018	green, similar to RAL 6018	green, similar to RAL 6018
yellow, similar to RAL 1023	-	yellow, similar to RAL 1023
Zone bus to zone controller	Zone bus to zone controller	Zone bus to zone controller
Corridor indicator lamps with call lamp, call lamp WC, presence lamps AW1 + AW2, doctor call	Corridor indicator lamps with call lamp, call lamp WC, presence lamp AW1, doctor call	Corridor indicator lamps with call lamp, call lamp WC, presence lamps AW1 + AW2
Passive call / cancel units, call button WC, cancel button WC, 4 call buttons	Passive call / cancel units, call button WC, cancel button WC, 4 call buttons	Passive call / cancel units, call button WC, cancel button WC, 4 call buttons
The duty room terminal is attached to the connection board for the duty room terminal via a 26-pin connector with ribbon cable and then clipped on.		
✓	✓	✓
32 00 32	32 00 33	32 00 34
ZT3I-S-D-DT-AW2	ZT3I-S-D-DT	ZT3I-S-D-AW2

Desktop Stand for Duty Room Terminal

The desktop stand including connection board with 2 m long connection cable is used for positioning the duty room terminal on the workplace of the care staff.

The duty room terminal is attached to the connection board for the duty room terminal via a 26-pin connector with ribbon cable and then clipped on.

The integration of the duty room terminal with desktop stand into the zone bus takes place via of a separate bus connection box with 8-pin socket.

MECHANICAL DETAILS:

Dimensions (L x W x H):	200 x 120 x 100 mm
Material:	Acrylic, milky-white
Order number:	32 01 50
Type:	A-TP



Bus Connection Box

The duty room terminal with desktop stand is connected to the zone bus via the bus connection box with 8-pin socket.

MECHANICAL DETAILS:

Dimensions (L x W):	81 x 81 mm
Material:	PC
Protection class:	IP 40
Colour:	white, similar to RAL 9010
Delivery including cover plate and frame	
Installation: in fm switch box, DIN 49073	
Interface: 8-pin socket for connection of desktop stand for duty room	
Order number:	32 01 55
Type:	AD-B

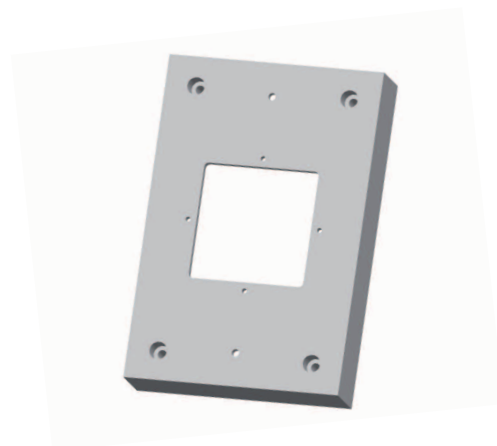


Surface Mounted Base for Room Terminal

The surface mounted base is used for surface mounting the room terminal. For this, the connection board of the room terminal is screwed to the surface mounted base.

MECHANICAL DETAILS:

Dimensions (L x W x H):	150 x 100 x 23 mm
Material:	Polystyrene
Colour:	white, similar to RAL 9010
Order number:	31 10 10
Type:	AP-ZT

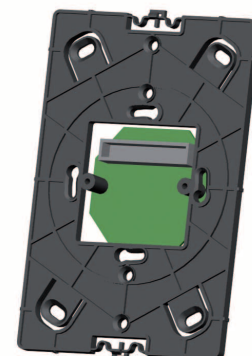


Connection Board for Duty Room Terminal

All incoming and outgoing wires are connected via terminal blocks on the connection board. All connection terminals are screw terminals. The connection board for the duty room terminal is separate.

MECHANICAL DETAILS:

Installation:	on fm switch box DIN 49073
Material:	PA-GF
Colour:	black, similar to RAL 9011
Order number:	32 01 00
Type:	A-ZT3I-S





Room Terminal with Display

The room terminal with display is the central control and operating unit for the room. Large push-buttons for presence marking as well as for call/emergency call release are available for the care staff. Targeted important information for the care staff is indicated via a backlit 32-character dot matrix display.

The operational elements of a room are wired to the room terminal in a star formation. For optical indication in the corridor, a corridor indicator lamp or a nameplate with integrated corridor indicator lamp can be connected to the room terminal. The room terminals and room modules are connected to the associated zone controller as well as with each other via the zone bus.

A corridor indicator lamp can be connected to the duty room terminal to enable call indication in the corridor. Via the zone bus, the duty room terminals of a ward are connected to the corresponding zone controller.



Room Terminal with Display

FUNCTIONS:

Presence push-button (AW), cancel push-button	green (AW1)
Remind lamp	green
Call / emergency call push-button	red
Orientation / reassurance lamp	red
Doctor call push-button for doctor call release	-
Call indication via display	dot-matrix display
Acoustic call forwarding through noise generator	✓
Emergency mode by loss of data traffic	✓
Monitoring of the connected call release elements	✓
Acoustic and optical indication of faults in the room via display	✓

MECHANICAL DETAILS:

Dimensions (L x W x H):	150 x 100 x 30 mm
Protection class:	IP40
Material:	PC-ABS
Housing:	white, similar to RAL 9010
Call push-button:	red, similar to RAL 3000
Doctor call push-button	-
Presence push-button 1:	green, similar to RAL 6018
Presence push-button 2:	-
Interfaces:	Zone bus to zone controller
Outputs:	Corridor indicator lamps with call lamp, call lamp WC, presence lamp AW1, reassurance lamps for call buttons beds 1 - 4
Inputs:	Passive call / cancel units, call button WC, cancel button WC, call button beds 1 - 4
Installation:	
Connection board for room terminal (Page 16)	✓
Order number:	32 00 10
Type:	ZT3I-S



Room Terminal with Display, Doctor Call without Presence 2



Room Terminal with Display, Presence 2 without Doctor Call



Room Terminal with Display, Doctor Call and Presence 2

green (AW1)	green (AW1) + yellow (AW2)	green (AW1) + yellow (AW2)
green	green + yellow	green + yellow
red	red	red
red	-	red
blue	-	blue
dot-matrix display	dot-matrix display	dot-matrix display
✓	✓	✓
✓	✓	✓
✓	✓	✓
✓	✓	✓

150 x 100 x 30 mm	150 x 100 x 30 mm	150 x 100 x 30 mm
IP40	IP40	IP40
PC-ABS	PC-ABS	PC-ABS
white, similar to RAL 9010	white, similar to RAL 9010	white, similar to RAL 9010
red, similar to RAL 3000	red, similar to RAL 3000	red, similar to RAL 3000
blue, similar to RAL 5010	-	blue, similar to RAL 5010
green, similar to RAL 6018	green, similar to RAL 6018	green, similar to RAL 6018
-	yellow, similar to RAL 1023	yellow, similar to RAL 1023
Zone bus to zone controller	Zone bus to zone controller	Zone bus to zone controller
Corridor indicator lamps with call lamp, call lamp WC, presence lamp AW1, reassurance lamps for call buttons beds 1 - 4	Corridor indicator lamps with call lamp, call lamp WC, presence lamp AW1 + AW2, reassurance lamps for call buttons beds 1 - 4	Corridor indicator lamps with call lamp, call lamp WC, presence lamp AW1 + AW2, reassurance lamps for call buttons beds 1 - 4
Passive call / cancel units, call button WC, cancel button WC, call button beds 1 - 4	Passive call / cancel units, call button WC, cancel button WC, call button beds 1 - 4	Passive call / cancel units, call button WC, cancel button WC, call button beds 1 - 4
The room terminal is attached to the connection board for the room terminal via a 26-pin connector with ribbon cable and then clipped on.		
✓	✓	✓
32 00 40	32 00 45	32 00 50
ZT3I-S-DT	ZT3I-S-AW2	ZT3I-S-DT-AW2

Room Module LED

The room module is the central control unit for a room and has integrated white, red and green LED corridor indicator lamps. The operating elements of a room are connected via the room module. The room module also includes the optical call indication in the corridor. Via the zone bus, the room modules are connected to a ward with the corresponding zone controller, as well as with each other. Mixed operation with room terminals or other room modules is possible.



Room module with LED indicator lamps and bed recognition



Room module with LED indicator lamps, without bed recognition



Room module with nameplate, LED indicator lamps and bed recognition

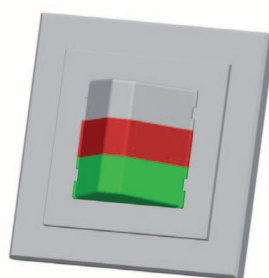
FUNCTIONS:

Display of call / emergency call	red	red	red
Display of presence	green	green	green
Display of bathroom / WC call / emergency call	white/red	white/red	white/red
Acoustic call forwarding through noise generator	-	-	-
Emergency mode by loss of data traffic	✓	✓	✓
Indication of faults in the room	✓	✓	✓
Monitoring of connected call release elements	✓	✓	✓
8-pin socket	-	-	-

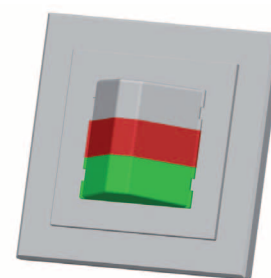
MECHANICAL DETAILS:

Dimensions (L x W x H):	81 x 81 x 15 mm	81 x 81 x 15 mm	148 x 100 x 35 mm
Protection class:	IP40	IP40	IP40
Material:	PC-ABS	PC-ABS	PC-ABS
Incl. cover plate and frame:	white, similar to RAL 9010	white, similar to RAL 9010	white, similar to RAL 9010
Interfaces:	Zone bus to zone controller	Zone bus to zone controller	Zone bus to zone controller
Outputs:	Corridor indicator lamp with call lamp, call lamp WC, presence lamp, reassurance lamp for call buttons beds 1 + 2, buzzer output	Corridor indicator lamp with call lamp, call lamp WC, presence lamp, reassurance lamp for call button, buzzer output	Corridor indicator lamp with call lamp, call lamp WC, presence lamps, reassurance lamp for call buttons beds 1 - 4, buzzer output
Inputs:	Passive call / cancel units, call button WC, cancel button WC, call buttons beds 1 + 2	Passive call / cancel units, call button WC, cancel button WC, call button bed	Passive call / cancel units, call button WC, cancel button WC, call buttons bed
Installation:	Installation in fm switch box DIN 49073. All connection terminals are screw terminals.		Via a 26-pin connector with ribbon cable, separate connection board
Delivery including cover plate and frame:	✓	✓	✓
Order number:	32 05 40	32 05 10	32 05 30
Type:	ZM-4	ZM-1	ZM-3

Room Module with LED Clinic Indicator Lamps



with bed recognition



without bed recognition

Dimensions (L x W x H):	81 x 81 x 28 mm	81 x 81 x 28 mm
Technical data as above	✓	✓
Order number:	32 05 60	32 05 50
Type:	ZM-4-KH	ZM-1-KH



Room module with call and cancel push-buttons



Room module with call and cancel push-buttons and auxiliary socket



Room module with cancel push-button as function module

Room Module

The room module, (model without LED), has integrated call and cancel push-buttons. Further characteristics are as described on Page 20.

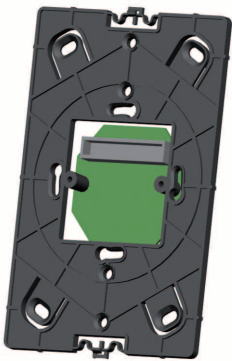
red	red	-
green	green	green
-	-	-
✓	✓	-
✓	✓	✓
✓	✓	✓
✓	✓	✓
-	✓	-

81 x 81 x 15 mm	81 x 81 x 15 mm	81 x 81 x 15 mm
IP40	IP40	IP40
PC-ABS	PC-ABS	PC-ABS
white, similar to RAL 9010	white, similar to RAL 9010	white, similar to RAL 9010
Zone bus to zone controller	Zone bus to zone controller	Zone bus to zone controller
Corridor indicator lamp with call lamp, call lamp WC, presence lamps, reassurance lamp for call button bed, buzzer output	Corridor indicator lamp with call lamp, call lamp WC, presence lamps, reassurance lamp for call button bed, buzzer output	-
Passive call / cancel units, call button WC, cancel button WC, call buttons bed	Passive call / cancel units, call button WC, cancel button WC, call buttons bed and auxiliary socket	Signal contact
Installation in fm switch box DIN 49073. All connection terminals are screw terminals.		
✓	✓	✓
32 05 20	32 06 30	32 05 25
ZM-2	ZM-2-NS	ZM-2-AT

Connection Board for Room Module with Nameplate

All incoming and outgoing wires are connected via terminal blocks. All connection terminals are screw terminals.

Installation:	on fm switch box DIN 49073
Material:	PA-GF
Colour:	black, similar to RAL 9011
Order number:	32 01 00
Type:	A-ZT3I-S



Call / Cancel Units

The call / cancel units are connected to a room terminal or room module.



Call unit

FUNCTIONS:

Call / emergency call push-button	red
8-pin socket	-
Call cancellation / presence marking via green cancel / presence push-button	-
Remind / presence lamp	-
Orientation / reassurance lamp	red
Socket for call / emergency call release via attached operating device	-
Acoustic call forwarding through noise generator	-

MECHANICAL DETAILS:

Dimensions (L x W):	81 x 81 mm
Protection class:	IP40
Material:	PC-ABS
Incl. cover plate and frame:	white, similar to RAL 9010
Call button with nurse symbol:	red, similar to RAL 3000
Cancel button:	-
Interfaces:	-
Installation	in fm switch box DIN 49073
Order number:	31 00 10
Type:	RT



Call unit with auxiliary socket



Call and presence / cancel unit



Call and cancel unit with auxiliary socket

red	red	red
✓	-	✓
-	green	green
-	green	green
red	red	red
✓	-	✓
-	✓	-

81 x 81 mm	81 x 81 mm	81 x 81 mm
IP40	IP40	IP40
PC-ABS	PC-ABS	PC-ABS
white, similar to RAL 9010	white, similar to RAL 9010	white, similar to RAL 9010
red, similar to RAL 3000	red, similar to RAL 3000	red, similar to RAL 3000
-	green, similar to RAL 6018	green, similar to RAL 6018
RJ-45 socket for connection of pear and multiple push-buttons or other portable operating devices	-	RJ-45 socket for connection of pear and multiple push-buttons or other portable operating devices
in fm switch box DIN 49073	in fm switch box DIN 49073	in fm switch box DIN 49073
31 00 20	31 00 30	31 00 40
RT-NS	RT-AT	RT-AT-NS

Call / Cancel Units

The call / cancel unit is connected to a room terminal or room module.



**Cancel unit / presence push-button
green**

FUNCTIONS:

Cancel / presence push-button with green remind / presence lamp	green
Cancel / presence push-button with yellow remind / presence lamp	-
Call cancellation / presence marking	green
Remind / presence lamp	green
WC call cancellation via cancel push-button	-
Acoustic call forwarding through noise generator	✓

MECHANICAL DETAILS:

Dimensions (L x W):	81 x 81 mm
Protection class:	IP40
Material:	PC-ABS
Incl. cover plate and frame:	white, similar to RAL 9010
Presence / cancel push-button:	green, similar to RAL 6018
Presence / cancel push-button:	-
Installation:	in fm switch box DIN 49073
Order number:	31 00 50
Type:	AT-1



**Cancel unit / presence push-button
green and yellow**



**Cancel unit / presence push-button
yellow**



**Cancel unit for separate WC call
cancellation**

green	-	-
yellow	yellow	-
green and yellow	yellow	-
green and yellow	yellow	-
-	-	green
✓	✓	-

81 x 81 mm	81 x 81 mm	81 x 81 mm
IP40	IP40	IP40
PC-ABS	PC-ABS	PC-ABS
white, similar to RAL 9010	white, similar to RAL 9010	white, similar to RAL 9010
green, similar to RAL 6018	-	green, similar to RAL 6018
yellow, similar to RAL 1023	yellow, similar to RAL 1023	-
in fm switch box DIN 49073	in fm switch box DIN 49073	in fm switch box DIN 49073
31 00 70	31 00 60	31 01 20
AT-1-2	AT-2	AT-WC

Call / Cancel Units

The call / cancel unit is connected to a room terminal or room module.



Call push-button red / doctor call push-button blue

FUNCTIONS:

Call push-button with red reassurance lamp	red
Doctor call push-button with red reassurance lamp	blue
Call / emergency call release via call push-button	red
Doctor call release via doctor call push-button	blue
Auxiliary socket, 8-pin	-
Diagnostic socket, 4-pin	-

MECHANICAL DETAILS:

Dimensions (L x W):	81 x 81 mm
Protection class:	IP40
Material:	PC-ABS
Incl. cover plate and frame:	white, similar to RAL 9010
Call push-button red with nurse symbol:	red, similar to RAL 3000
Doctor call push-button blue with doctor symbol:	blue, similar to RAL 5010
Interfaces:	-
Installation:	in fm switch box DIN 49073
Order number:	31 00 80
Type:	RT-DT



Doctor call push-button blue



Call push-button red with auxiliary contact and diagnostic socket



Unit with 2 x 4-pin diagnostic sockets

-	red	-
blue	-	-
-	red	-
blue	-	-
-	✓	-
-	✓	✓ 2 x

81 x 81 mm	81 x 81 mm	81 x 81 mm
IP40	IP40	IP40
PC-ABS	PC-ABS	PC-ABS
white, similar to RAL 9010	white, similar to RAL 9010	white, similar to RAL 9010
-	red, similar to RAL 3000	-
blue, similar to RAL 5010	-	-
-	RJ-45 jack socket for connection of pear and multiple push-buttons or other portable operating devices, RJ-10 socket for connection of medical equipment	Zwei RJ-10 Steckbuchsen für Two RJ-10 sockets for diagnostic calls via potential-free contact
in fm switch box DIN 49073	in fm switch box DIN 49073	in fm switch box DIN 49073
31 01 70	31 00 26	31 01 60
DT	RT-NS-DIA	DIA-2

Call Unit with Auxiliary Socket

The call / cancel unit is connected to a room terminal or room module.



**Call unit with auxiliary socket for sound,
for installation in Trilux light ES 403**



**Call unit with auxiliary socket for sound,
for installation in fm switch box**

FUNCTIONS:

Call push-button with red reassurance lamp	red	red
Call / emergency call release via call push-button	red	red
8-pin auxiliary socket for connection of multiple push-button MT-Ton via a protective adapter	✓	✓
8-pin auxiliary socket for connection of the patient handset MT-ELA via a protective adapter	-	-
Control of 2 light sources via 2 light push-buttons on the connected multiple push-button	✓	✓
Control of 2 light sources via 2 light push-buttons on the connected handset. Selection of ELA channels and TV as well as volume control of the audio signal via control buttons on the connected handset	-	-

MECHANICAL DETAILS:

Dimensions (L x W x H):	81 x 63 x 30 mm	81 x 81 mm
Protection class:	IP40	IP40
Material:	PA / PC / Polystyrene	PA / PC / Polystyrene
Incl. central / cover plate and frame:	white, similar to RAL 9010	white, similar to RAL 9010
Call push-button red with nurse symbol:	red, similar to RAL 3000	red, similar to RAL 3000
Interfaces:	RJ-45 jack socket for connection of multiple push-button MT-TON or other portable operating devices	RJ-45 jack socket for connection of multiple push-button MT-TON or other portable operating devices
Installation:	in Trilux lamp ES 403	in fm switch box DIN 49073
Order number:	31 09 00	31 09 05
Type:	RT-NS-TON	RT-NS-TON-UP



Call unit with auxiliary socket for sound, for sm mounting



Call unit with auxiliary socket for sound and ELA, for installation in medical supply units



Call unit with auxiliary socket for sound and ELA, for installation in double fm switch box

red	red	red
red	red	red
✓	✓	✓
-	✓	✓
✓	-	-
-	✓	✓

95 x 72 x 33 mm	81 x 63 x 30 mm	152 x 81 mm
IP40	IP40	IP40
PA / PC / Polystyrene	PA / PC / Polystyrene	PA / PC / Polystyrene
white, similar to RAL 9010	white, similar to RAL 9010	white, similar to RAL 9010
red, similar to RAL 3000	red, similar to RAL 3000	red, similar to RAL 3000
RJ-45 jack socket for connection of multiple push-button MT-TON or other portable operating devices	RJ-45 jack socket for connection of multiple push-button MT-ELA or other portable operating devices	RJ-45 jack socket for connection of multiple push-button MT-ELA or other portable operating devices
Surface mounted	In medical supply unit	In double fm switch box
31 09 06	31 09 50	31 09 60
RT-NS-TON-AP	RT-NS-TON-ELA	RT-NS-TON-ELA-UP

LED Corridor Indicator Lamps

The corridor indicator lamps are fitted with lamp cells and light-emitting diodes. They are connected to a room terminal or room module.



LED corridor indicator lamp red



LED corridor indicator lamp red / green

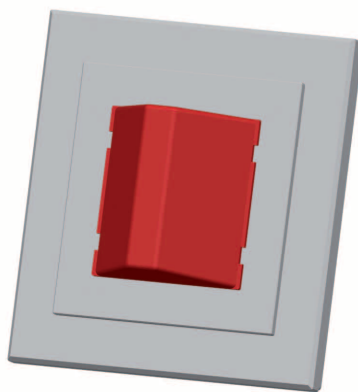
FUNCTIONS:

Display of call / emergency call	red	red
Display of Presence 1	-	green
Display of Presence 2	-	-
Display of bathroom / WC call / emergency call	-	-

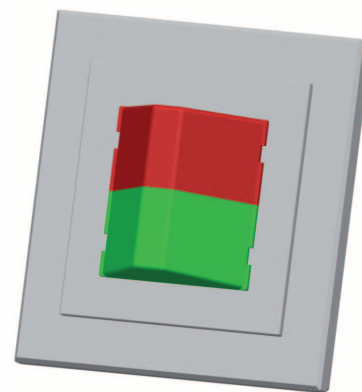
MECHANICAL DETAILS:

Dimensions (L x W x H):	81 x 81 x 15 mm	81 x 81 x 15 mm
Protection class:	IP40	IP40
Material:	PC- ABS	PC-ABS
Incl. cover plate and frame:	white, similar to RAL 9010	white, similar to RAL 9010
Installation:	in fm switch box DIN 49073	in fm switch box DIN 49073
Order number:	31 05 00	31 05 10
Type:	ZL-1	ZL-2

LED Clinic Corridor Indicator Lamps



LED Clinic corridor indicator lamp red



LED Clinic corridor indicator lamp red / green

Dimensions (L x W x H):	81 x 81 x 28 mm	81 x 81 x 28 mm
Technical data as above	✓	✓
Order number:	31 05 05	31 05 15
Type:	ZL-1-KH	ZL-2-KH



LED corridor indicator lamp white / red / green



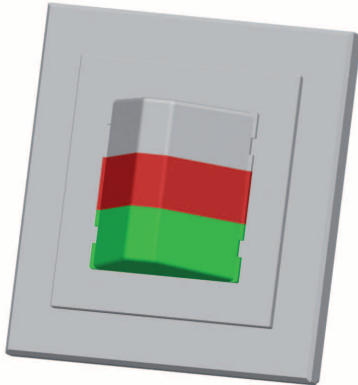
LED corridor indicator lamp red / green / yellow



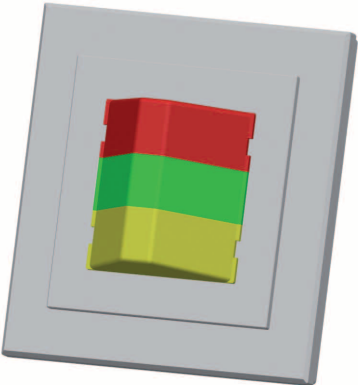
LED corridor indicator lamp white / red / green / yellow

red	red	red
green	green	green
-	yellow	yellow
white/red	-	white/red

81 x 81 x 15 mm	81 x 81 x 15 mm	81 x 81 x 15 mm
IP40	IP40	IP40
PC-ABS	PC-ABS	PC-ABS
white, similar to RAL 9010	white, similar to RAL 9010	white, similar to RAL 9010
in fm switch box DIN 49073	in fm switch box DIN 49073	in fm switch box DIN 49073
31 05 20	31 05 30	31 05 40
ZL-3-1	ZL-3-2	ZL-4



LED Clinic corridor indicator lamp white / red / green



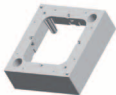
LED Clinic corridor indicator lamp red / green / yellow



LED Clinic corridor indicator lamp white / red / green / yellow

81 x 81 x 28 mm	81 x 81 x 28 mm	81 x 81 x 28 mm
✓	✓	✓
31 05 25	31 05 35	31 05 45
ZL-3-1-KH	ZL-3-2-KH	ZL-4-KH

Surface mounted base for surface mounting of fm installation units	Dimensions: 81 x 81 x 25 mm, Material: PC-ABS Colour: weiß, ähnlich RAL 9010
Order number: 31 10 00	Type: AP-1F



Nameplate with LED Corridor Indicator Lamp

The homogeneous design ensures a homely ambience.

The nameplate is easy to change. Highly efficient LED's are used. The brightness of the indicator lamps conforms to DIN VDE 0834/01.

Connection to room terminal or room module.



Nameplate with LED corridor indicator lamp red / green



Nameplate with LED corridor indicator lamp white / red / green

FUNCTIONS:

Display of call / emergency call	red	red
Display of Presence 1	green	green
Display of Presence 2	-	-
Display of bathroom / WC call / emergency call	-	white/red

MECHANICAL DETAILS:

Dimensions (L x W x H):	100 x 148 x 35 mm	100 x 148 x 35 mm
Protection class:	IP40	IP40
Material:	PC / PA-GF	PC / PA-GF
Housing:	white, similar to RAL 9010 *	white, similar to RAL 9010 *
All RAL colours available on request!	✓	✓
Installation:	Snap-on fastening on supplied connection board for fixing to fm switch box DIN 49073	Snap-on fastening on supplied connection board for fixing to fm switch box DIN 49073
Order number:	31 07 10	31 07 00
Type:	Namen-ZL-2	Namen-ZL-3-1

* all RAL colours available on request.

Nameplate Service Set

Set consisting of: 100 sheets A4 card, white, fine perforated for easy separation of the nameplate inserts + 10 transparent covers, foiled, software for printing nameplate.

Order number:	31 07 01
Type:	Namen-ZL-S



**Nameplate with LED corridor indicator
lamp red / green / yellow**



**Nameplate with LED corridor indicator
lamp white / red / green / yellow**



**Nameplate without LED corridor indicator
lamp**

red	red	-
green	green	-
yellow	yellow	-
-	white/red	-

100 x 148 x 35 mm	100 x 148 x 35 mm	100 x 148 x 35 mm
IP40	IP40	IP40
PC / PA-GF	PC / PA-GF	PC / PA-GF
white, similar to RAL 9010 *	white, similar to RAL 9010 *	white, similar to RAL 9010 *
✓	✓	✓
Snap-on fastening on supplied connection board for fixing to fm switch box DIN 49073	Snap-on fastening on supplied connection board for fixing to fm switch box DIN 49073	Snap-on fastening on supplied connection board for wall moun- ting
31 07 20	31 07 40	31 07 30
Namen-ZL-3-2	Namen-ZL-4	Namen-ZL-0

Pear Push-Button

Multiple Push-Buttons

Pull Cord Switches



Pear push-button



Multiple push-button with one light push-button



Multiple push-button with two light push-buttons

FUNCTIONS:

Call / emergency call release via call push-button with nurse symbol	red	red	red
Orientation / reassurance lamp	red	red	red
Light push-button(s)	-	yellow	yellow 2 x
Call / emergency call release via pull cord switch	-	-	-
Call / emergency call release via rubber ball	-	-	-
Call cancellation via pull cord switch	-	-	-

MECHANICAL DETAILS:

Dimensions (L x W x H):	110 x 40 x 22 mm	110 x 40 x 22 mm	110 x 40 x 22 mm
Protection class:	IP65	IP65	IP65
Material:	ABS	ABS	ABS
Housing / incl. cover plate and frame *:	white, similar to RAL 9010	white, similar to RAL 9010	white, similar to RAL 9010
Installation:			
Connection:	Pear and multiple push-buttons are delivered with a 3 m long connection cable and auto-release protective adapter for non-destructive plug-out with 8-pin plug		
Order number:	31 04 01	31 04 11	31 04 21
Type:	BT-hc	BT-1LT-hc	BT-2LT-hc

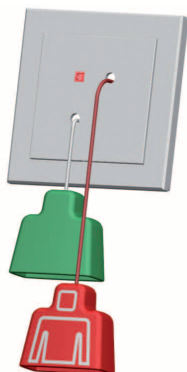
Wall Bracket

Wall bracket for pear and multiple push-buttons. Mounting: screw or glue fixing.	
Order number:	31 04 46
Type:	WH-BT





Pull cord switch with 2 m long pull cord with red knob with nurse symbol



Pull cord switch with 2 m long pull cord with red knob with nurse symbol and call cancellation via white 80 cm long pull cord with green knob



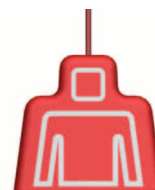
Pneumatic call unit with pneumatic switch element. Release through squeezing the red rubber ball on 2 m long clear plastic tube

-	-	-
red	red	red
-	-	-
✓	✓	-
-	-	✓
-	green	-

81 x 81 mm	81 x 81 mm	81 x 81 mm
IP54	IP54	IP54
PC	PC	PC
* white, similar to RAL 9010	* white, similar to RAL 9010	* white, similar to RAL 9010
wall or ceiling mounting	wall or ceiling mounting	wall or ceiling mounting
Connection to room terminal or room module. Delivery incl. cover plate and frame	Connection to room terminal or room module. Delivery incl. cover plate and frame	Connection to room terminal or room module. Delivery incl. cover plate and frame
31 00 90	31 02 90	31 01 80
ZT	ZT-AT	PNEU-RT

Replacement pull cord red

With red knob with nurse symbol and clip.	
Order number:	31 00 95
Type:	ZT-SCHNUR



Replacement pull cord white

With green knob and clip.	
Order number:	31 00 98
Type:	ZT-SCHNUR-WEISS



Multiple Push-Button Sound Patient Handset



FUNCTIONS:

Call / emergency call release via call push-button with nurse symbol	red	red
Orientation / reassurance lamp	red	red
2 light push-buttons	yellow	yellow
2 push-buttons for volume control	blue	blue
1 jack plug for headphone connection 3.5 mm	✓	✓
2 channel selection push-buttons for 5 radio and 1 TV sound signal	-	green
6 light-emitting diodes for channel indication	-	✓

MECHANICAL DETAILS:

Dimensions (L x W x H):	120 x 46 x 22 mm	120 x 46 x 22 mm
Protection class:	IP40	IP40
Material:	PC-ABS	PC-ABS
Housing:	white, similar to RAL 9010	white, similar to RAL 9010
Connection:	with a 3 m long connection cable and auto-release protective adapter for non-destructive plug-out with 8-pin plug	with a 3 m long connection cable and auto-release protective adapter for non-destructive plug-out with 8-pin plug
Order number:	31 04 70	31 04 80
Type:	MT-TON	MT-ELA

Wall Bracket

Wall bracket for multiple push-buttons and patient handset. Mounting: screw or glue fixing.

Order number: **31 04 47**

Type: **WH-MT**



Auto-Release Protective Adapter for Pear and Multiple Push-Buttons

The auto-release protective adapter enables the non-destructive plug-out of portable operating devices and is provided with a 7-pin coupling and an 8-pin plug for the auxiliary socket.

Order number: **31 04 31**

Type: **SCH-ADAPT-ARB**



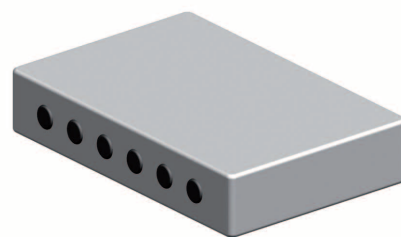


Interface Unit, 24 Inputs

The interface unit serves to integrate alarm messages (e.g. fire alarm, lift, safety lighting, doorbell etc.). It is set out for 24 inputs in the range AC/DC 5 – 30 V. The inputs are galvanic separated and can work in groups of 4 inputs with different reference potentials. The interface is self-monitoring. The current supply is 24 V DC.

MECHANICAL DETAILS:

Dimensions (L x W x H):	200 x 145 x 47 mm
Protection class:	IP 40
Material:	PC-ABS
Housing:	grey, similar to RAL 7035
Installation:	mounted on DIN rail
Order number:	32 06 00
Type:	KE-24E

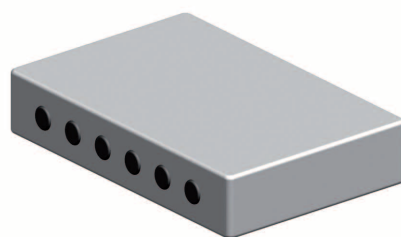


Interface Unit, 16 Outputs

The interface unit serves to switch external devices (lamps, door magnets, horns etc.). Activation occurs via the corresponding software, according to the configuration. The 16 outputs are configured individually. Each output relay is usable as a potential-free changeover contact and can be loaded up to 8 A. The current supply is 24 V DC.

MECHANICAL DETAILS:

Dimensions (L x W x H):	200 x 145 x 47 mm
Protection class:	IP 40
Material:	PC-ABS
Housing:	grey, similar to RAL 7035
Installation:	mounted on DIN rail
Order number:	32 02 30
Type:	KA-16



Current Impulse Switch

The current impulse switches are used for switching the room lighting or the reading light. The devices have their own galvanic separated current supply. Installation is either in a double flush mounted switch box or in medical supply units.

TECHNICAL DATA:

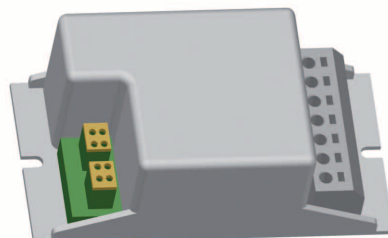
Dimensions (L x W x H):	85 x 42 x 32 mm
Operating voltage:	150-250 V, 50 Hz
Nominal switch rating:	6 A / 250 V AC

Current impulse switch with one contact

Order number:	32 04 80
Type:	STST-01

Current impulse switch with two contacts

Order number:	32 04 82
Type:	STST-02



Corridor Display, Single-Sided for Wall Mounting

With 16-character dot-matrix LED display for self-illuminating plain text display and integrated noise generator.

FUNCTIONS DEPENDING ON CONFIGURATION:

2 volume levels (e.g. for day / night switching)
Time display, when no calls exist
Different display colour for calls (red) and time (green)
Automatic change of font if more than 13 characters to be displayed

EQUIPPED WITH:

Contrast-increased, anti-reflective front panel
Integrated brightness control
16-character dot-matrix LED display
Integrated interface for zone bus

MECHANICAL DETAILS:

Dimensions (L x W x H):	660 x 100 x 65 mm
Protection class:	IP 40
Material:	steel plate / Al
Colour:	white, similar to RAL 9010
Installation:	wall mounted
Order number:	31 05 90
Type:	DP-WAND



Corridor Display, Single-Sided for Ceiling Mounting

With 16-character dot-matrix LED display for self-illuminating plain text display and integrated noise generator.

FUNCTIONS DEPENDING ON CONFIGURATION:

2 volume levels (e.g. for day / night switching)
Time display, when no calls exist
Different display colour for calls (red) and time (green)
Automatic change of font if more than 13 characters to be displayed

EQUIPPED WITH:

Contrast-increased, anti-reflective front panel
Integrated brightness control
16-character dot-matrix LED display
Integrated interface for zone bus
Delivered with baldachin and fastening material for mounting directly below the ceiling, as well as two 500 mm long infinitely adjustable pendulum tubes

MECHANICAL DETAILS:

Dimensions (L x W x H):	660 x 100 x 65 mm
Protection class:	IP 40
Material:	steel plate / Al
Colour:	white, similar to RAL 9010
Installation:	ceiling mounted
Order number:	31 05 91
Type:	DP-DECKE



Corridor Display, Double-Sided for Ceiling Mounting

With 2 x 16-character LED display. Dimensions (L x W x H) 660 x 100 x 100. Further details as described above.

Order number:	31 05 92
Type:	DP-DOPPEL





Function Description HC3 Call Set

The call set HC3 conforms to the currently valid DIN VDE 0834 Parts 1 and 2. By means of a pull cord switch to be found in the WC, whose knob stretches close to the floor and which is usually hanging next to the WC or the washbasin, the person requiring assistance releases a call. The call release is indicated in the WC by the red reassurance lamp of the pull cord switch. In the corridor, the call is indicated above the WC door by illumination of the red LED lamp of the associated call module or, where required, acoustically via a buzzer within the call module. The call is indicated optically and acoustically via a duty room unit in a central position (doorman, reception, caretaker etc.). By acknowledging the call using the yellow buzzer cancel push-button on the duty room unit, the acoustic indication can be suppressed briefly. A potential-free contact in the call module enables, in addition, automatic forwarding of call signals to the building control system or another central reporting point. In accordance with DIN, call cancellation only occurs via the cancel push-button located where the call is released. The wiring is carried out in wire-saving technology with standard telecommunications cable. All components of the call set, including the power rectifier, are designed for mounting in an fm switch box conforming to DIN 40973 and are delivered in a modern design complete with cover plate and frame.

HC3 Call Set with Duty Room Unit

In public buildings WC's suitable for the disabled are mandatory. These WC's must be fitted with a call option.

For this application, hospicall has developed a special set, which can be extended with further accessories as required.

HC3 Call Set consists of:

- ☐ 1 x pull cord switch with 2 m long red pull cord with knob and red LED reassurance lamp, for wall or ceiling mounting
- ☐ 1 x call module with red LED indicator lamp, integrated potential-free contact
- ☐ 1 x cancel unit with green cancel push-button
- ☐ 1 x power rectifier 24 V, 250 mA
- ☐ 1 x duty room unit

TECHNICAL DATA:

Mounting of all units in fm switch boxes, DIN 49073

Including cover plates and frames: white, similar to DIN 9010

Order number: 33 00 10

Type: BEH-WC-HC3



HC3 Call Set without Duty Room Unit

as described above, but without duty room unit.

Order number: 33 00 11

Type: BEH-WC-HC3-oDZE

HC3 Duty Room Unit

The parallel duty room unit is supplied with an integrated buzzer, a green presence push-button with green LED presence lamp, as well as a yellow buzzer cancel push-button with red LED indicator lamp.

FUNCTIONS:

- ☐ Presence marking via presence push-button, green
- ☐ Presence lamp, green
- ☐ Noise generator for acoustic call forwarding
- ☐ Temporary acoustic call suppression via buzzer cancel push-button for 20 secs, yellow
- ☐ LED indicator lamp, red

MECHANICAL DETAILS:

Dimensions (L x W):	81 x 81 mm
Housing:	white, similar to RAL 9010
Protection class:	IP40
Material:	PC-ABS
Presence push-button:	green, similar to RAL 6018
Buzzer cancel push-button:	yellow, similar to RAL 1023
Including cover plate and frame:	white, similar to RAL 9010
Installation:	In fm switch box DIN 49073
Order number:	31 01 00
Type:	BEH-WC-DZ



HC3 Duty Room Terminal

NEW

The HC3 duty room terminal serves for the selective display of calls from several WC's for the disabled in plain text.

It is fitted with a green presence push-button, a yellow buzzer cancel push-button, an integrated buzzer and a 2 x 16 character illuminated LCD display.

The text messages are freely configurable with the help of the PC software supplied.

FUNCTIONS:

- ☐ Central reporting of up to 20 calls
- ☐ Optical and acoustic call indication
- ☐ Two-row display for indicating call messages
- ☐ Configurable call texts up to 16 characters
- ☐ 20 galvanic separated inputs with common earth
- ☐ Quiescent or working current evaluation
- ☐ Suppression of acoustic message for 20 seconds
- ☐ Presence push-button, green
- ☐ Temporary acoustic call suppression via buzzer cancel push-button, yellow
- ☐ Configuration of text messages via PC

MECHANICAL DETAILS:

Dimensions (L x W x H):	145 x 100 x 24 mm
Housing:	weiß, ähnlich RAL 9010
Protection class:	IP40
Material:	PC-ABS
Current supply:	24 V DC
Delivery includes:	Duty room terminal HC3 Connection board USB connection cable USB stick with configuration software
Installation:	Screw fixing on fm switch box DIN 49073
Order number:	33 10 20
Type:	HC3-DT



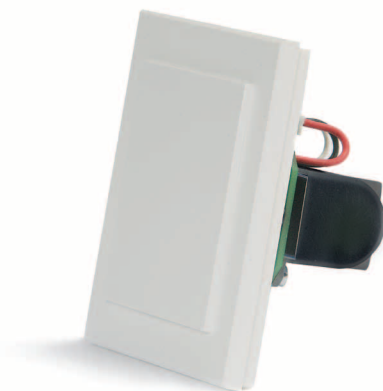
UPS for HC3 Call Set

NEW

For installation in a switch box DIN 49073. The UPS ensures the functioning of the HC3 call set in the case of a power failure, as required by DIN VDE 0834. It has been specially developed for projects where no UPS is supplied by the customer. The installation in a switch box solves the problem of finding a suitable location. Via the signal line, the states "UPS active" and "Accu defective" are indicated.

MECHANICAL DETAILS:

Dimensions (L x W):	81 x 81 mm
Housing:	white, similar to RAL 9010
Input voltage:	24 V DC from the power supply of the HC3 call set
Output voltage in accumulator mode:	22.8 V DC +/- 10%
Nominal load:	130 mA in accumulator mode for 1 hour
Maximum load in accumulator mode:	300 mA for 15 mins
Maximum load in mains operation:	250 mA
Thermal monitoring	✓
Overcurrent protection	✓
Installation:	in fm switch box DIN 49073
Order number:	31 01 50
Type:	HC3-USV



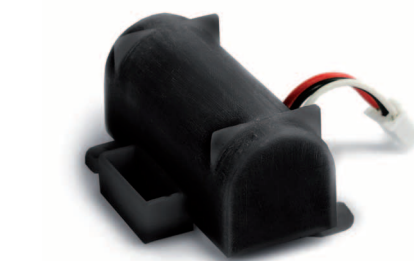
Accumulator Replacement Set for HC3 UPS

NEW

DIN VDE 0834 requires the yearly exchange of wear parts such as batteries and accumulators. The replacement set enables the easy exchange by means of 2 screws and a connector.

MECHANICAL DETAILS:

Dimensions (L x W x H):	53 x 38 x 26 mm
Installation:	Back of HC3-UPS
Order number:	31 01 55
Type:	USV-WECHSEL



LED Corridor Indicator Lamp with Buzzer

The LED corridor indicator lamp with buzzer is fitted with a trapeze-shaped lamp cell, which contains red light-emitting diodes. It serves as a parallel display and is connected to the call module of the disabled WC.

Functions:

- ☐ Display of call / emergency call
- ☐ Noise generator for acoustic call indication

MECHANICAL DETAILS:

Dimensions (L x W x H):	81 mm x 81 mm x 28 mm
Protection class:	IP40
Material:	PC-ABS
Including cover plate and frame	white, similar to RAL 9010
Installation:	in fm switch box DIN 49073
Order number:	31 01 40
Type:	ZL-1-KH-SU



Small Horn 24 V DC

As noise generator for dry and wet rooms for connection to the call module of the HC3 call set, suitable for permanent operation.

MECHANICAL DETAILS:

Dimensions (L x W x H):	75 x 77 x 85 mm
Protection class:	IP 43
Noise level:	95 dB(A)
Material:	PC-ABS
Colour:	grey, similar to RAL 7035
Installation:	sm mounting
Including cover plates and frame	white, similar to RAL 9010
Order number:	33 00 40
Type:	HUP-02

Y-Adapter

For connection of an 8-pin auxiliary socket for connection of 2 pear push-buttons

Order number:	31 04 34
Type:	Y-ADAPT-2BT

Connection Extension

Through the use of connection extensions with 7-pin socket and 7-pin coupling between the connection cord of an operating device and the protective adapter, the connection cords of the operating devices can be extended easily.

Call-circuit monitoring enables each disconnection of a connector to be indicated immediately.



MECHANICAL DETAILS:

Length:	2 m
Protection class:	IP 40
Material:	PVC
Colour:	white, similar to RAL 9010
Order number:	31 04 40
Type:	ANSCHL-VERL-2M

Connection Cord DIA

The connection cable for diagnostic devices is fitted with an RJ-10 plug for the diagnostic socket on one end and can be freely assembled on the other end to suit the connection of the diagnostic device.

MECHANICAL DETAILS:

Length:	3 m
Protection class:	IP 40
Material:	PVC
Colour:	black, similar to RAL 9011
Order number:	31 04 45
Type:	ANSCHL-DIA-3M



Radio Sets

The radio sets consist of a pluggable receiver and a mobile transmitter for call release. The transmitter is available as a pendant transmitter or a wrist strap transmitter. The pluggable receiver is connected to a unit with an 8-pin auxiliary socket. A maximum of 32 transmitters can be assigned to a receiver. Frequency: 868.3 MHz

Note:

The radio set is an add-on to the call system P3. It does not fulfil the safety requirements of DIN VDE 0834.

Radio Set with Pendant Transmitter

Order number:	31 20 10
Type:	FUFI2

Radio Set with Wrist Strap Transmitter

Order number:	31 20 50
Type:	FUFI2-AMB

Radio Receiver 2

For connection to auxiliary socket P3 8-pin RJ-45

Order number:	31 20 20
Type:	FU2-STEU

Radio Pendant Transmitter 2 with Strangulation Protection

Order number:	31 20 30
Type:	FU2-UMH

Radio Armband Transmitter 2 with Fabric Wrist Strap

Order number:	31 20 40
Type:	FU2-AMB

Battery Replacement Set for Radio Transmitter

Consisting of: special key, sealing ring, 3 V battery (CR2032)

Order number:	31 01 95
Type:	FU-FI-BWS

Warning!

The radio transmitters of Series 2 are not compatible with older radio sets (different frequency).

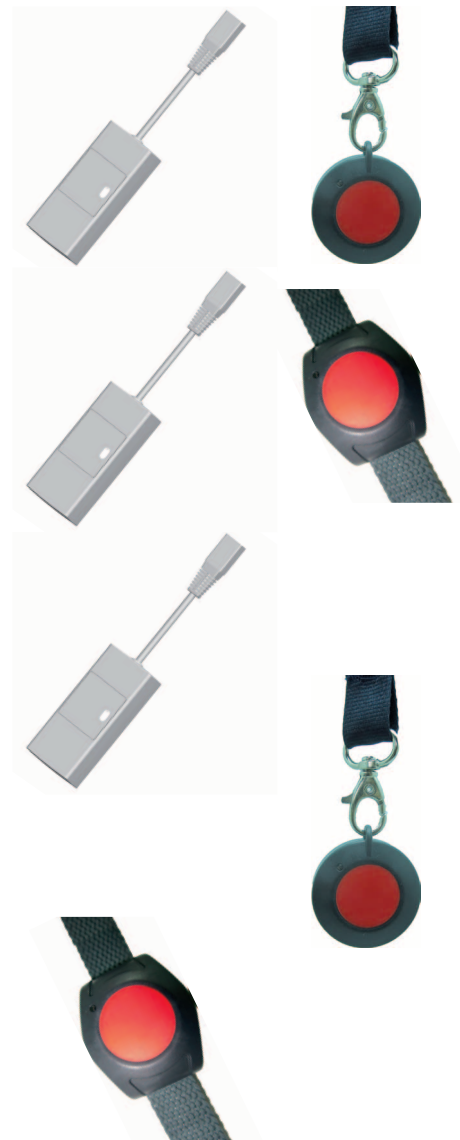
Sound Detector

The sound detector can initiate a call by directly pressing the push-button as well as via a corresponding noise level. The sensitivity is adjustable. The detector is fitted with a 2 m long connection cord and an RJ-45 connector.

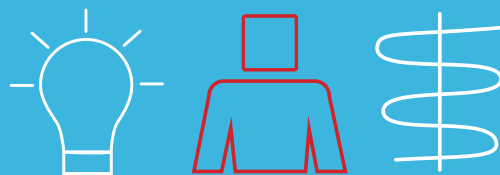
EQUIPPED WITH:

Call / emergency call release via noise level or red call push-button with nurse symbol
Orientation / reassurance lamp, red
Function indicator lamp, green

Order number:	31 04 60
Type:	SW-1







... damit auf Knopfdruck **Hilfe** kommt!